

Powerex assemblies with the PD prefix are available in two varieties. PDA assemblies are disc based assemblies and PDB assemblies are module based assemblies. In order to determine the proper assembly for your application please provide the following information.

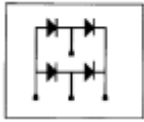
When completed, save the file and email it to:

Jeff Osikowicz, Design Manager, IPP, Mechanical Modeling at [josikowicz@pwrx.com](mailto:josikowicz@pwrx.com) 724-925-4488

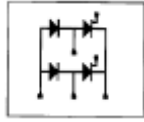
Date:     /     /

### Circuit Type:

Single Phase Bridge



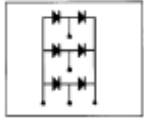
Single Phase Half Controlled Bridge



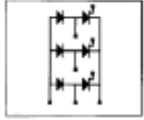
Single Phase Full Controlled Bridge



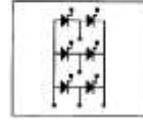
Three Phase Bridge



Three Phase Half Controlled Bridge



Three Phase Full Controlled Bridge



### Electrical Parameters:

Maximum Continuous Output Current:                      Amps

Maximum Overload:      Output DC Current              Amps              Overload Duration              Sec

Input Voltage (Vac-rms for Single Phase, Vac-RMS Line to Line for Three Phase):              Volts

Line Frequency:     50 Hertz    or     60 Hertz

### Environmental Parameters:

Maximum Ambient Temperature:                      °C

Maximum Altitude (feet above sea level):              ft.

Please provide the following contact information so that we may discuss the above provided information.

Company:

Main Contact:

Preferred method of contact:     Phone:

Email:

Additional Information/Comments: